



SAWING SYSTEMS INC.
 P.O. Box 3754 • Knoxville, TN 37927-3754 • (865) 525-0600
 (800) 489-0601 • Telefax (865) 525-2320

SUBJECT _____

Tilt turntable
 Hydraulic diagram

DATE Jan 14 2004

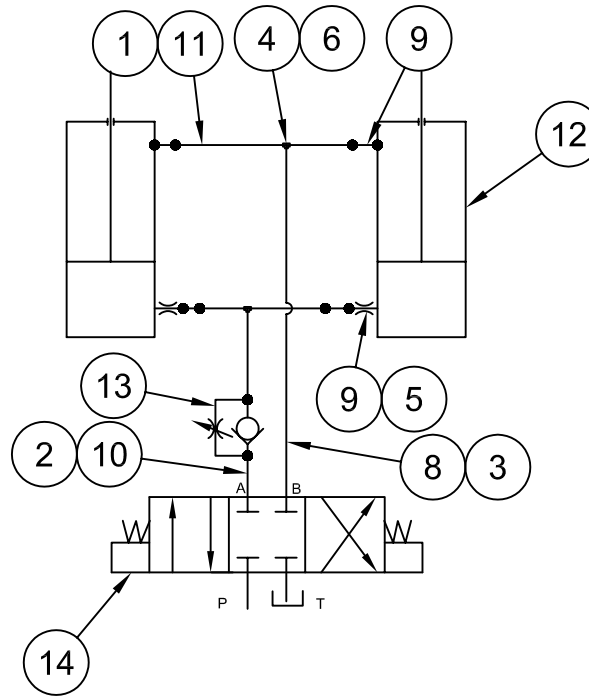
BY M.F CHKD. BY _____

JOB NO. _____

REQ'D. _____

DWG. NO. A-4286-7

SCALE none



ITEM	PART NUMBER	PICTORIAL TYPE	DESCRIPTION	U/M	QTY
1	HF-5000-254		2502-06-06, MALE JIC/FEMALE PIPE, 90 DEGREE B1 = 9/16-18 A2 = 3/8-18 L = 1.020 M = 1.310	EACH	4
2	HF-5000-020		6405-06-06-O MALE O-RING X FEMALE PIPE B1 = 9/16-18 A2 = 3/8-18 L = 1.160 C = 7/8	EACH	1
3	HF-5000-256		6400-06-06-0 JIC X O-RING BOSS STRAIGHT MALE ADAPTER B1 = 9/16-18 B2 = 9/16-18 L = 1.300 C = 11/16	EACH	1
4	HF-5000-262		2404-06-06, MALE JIC/MALE PIPE, STRAIGHT MALE JIC/MALE PIPE, STRAIGHT B1 = 9/16-18 A2 = 3/8-18 L = 1.421 C = 3/4	EACH	3
5	HF-5000-253		6801-06-08-NWO JIC X O-RING BOSS 90° MALE ADAPTER B1 = 9/16-18 B2 = 3/4-16 M = 1.160 L = 1.450 Y = 13/16	EACH	4
6	HF-5000-024		5605-06-06-06 FP-FP-FP TEE A1 NPTF = 3/8-18 A2 NPTF = 3/8-18 A3 NPTF = 3/8-18 N = 1.020 Y = 7/8	EACH	2
7	HF-5000-259		6H781-06 X 37" HOSE W/ 1AA6FJ6 SWIVEL END FITTINGS	EACH	4
8	HF-5000-260		6H781-06 X 156" HOSE W/ 1AA6FJ6 SWIVEL END FITTINGS	EACH	2
9	A-4552-3		ORIFICE - RESTRICTION	EACH	2
10	A-4594-070		3/8" NPT MALE PIPE , THD BOTH ENDS X 7" LONG	EACH	1
11	A-4594-400		3/8" NPT MALE PIPE , THD BOTH ENDS X 40" LONG	EACH	4
12	HP-5000-016		286-258 CHIEF HYD CYL	EACH	2
13	HP-5000-005		F-600-S FLOW CONTROL, 3/8 "	EACH	2
14	HP-5000-368		5 HP HYDRAULIC POWER UNIT	EACH	1

HF-5000-261 Hydraulic Tilt Table Piping Kit